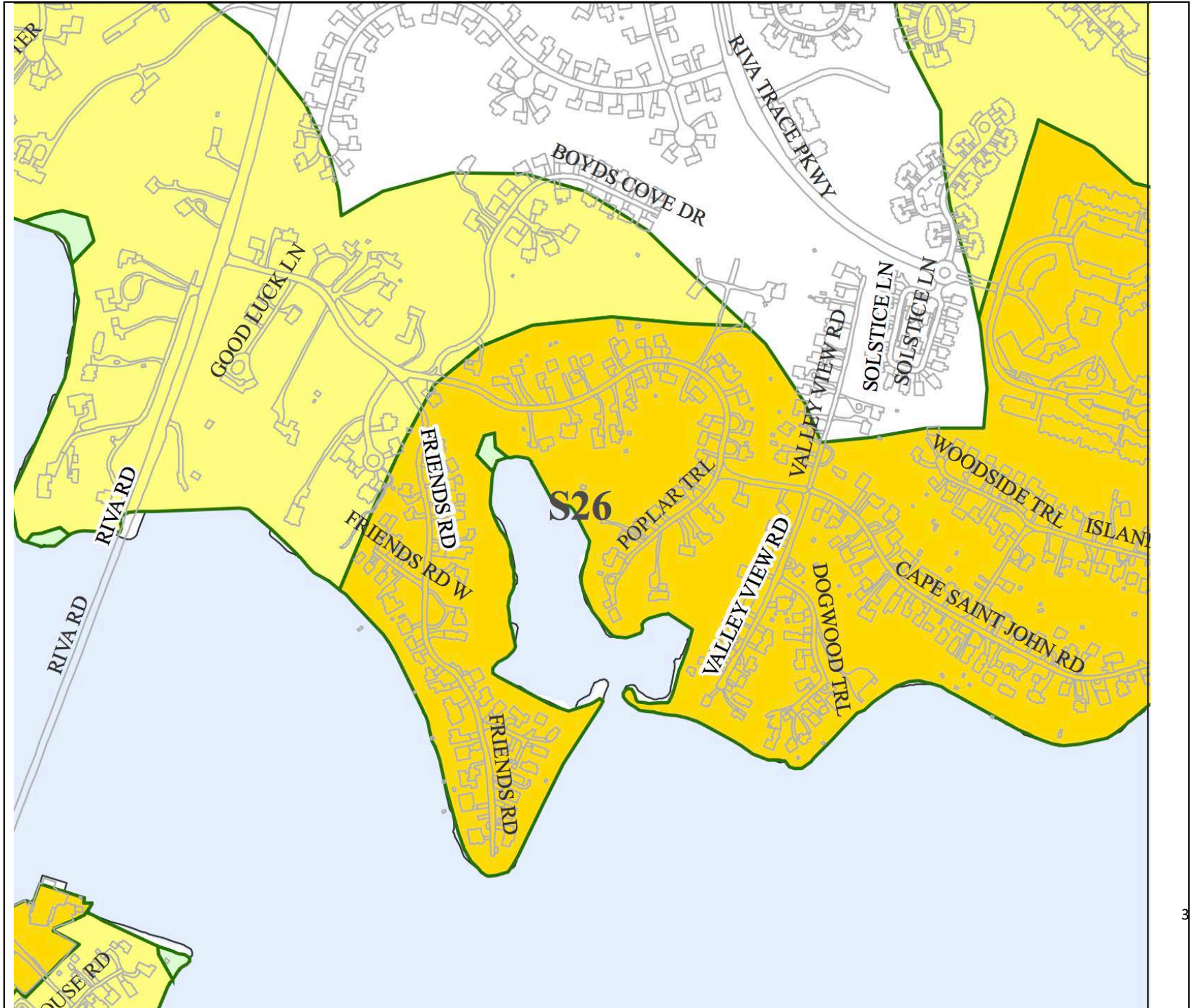


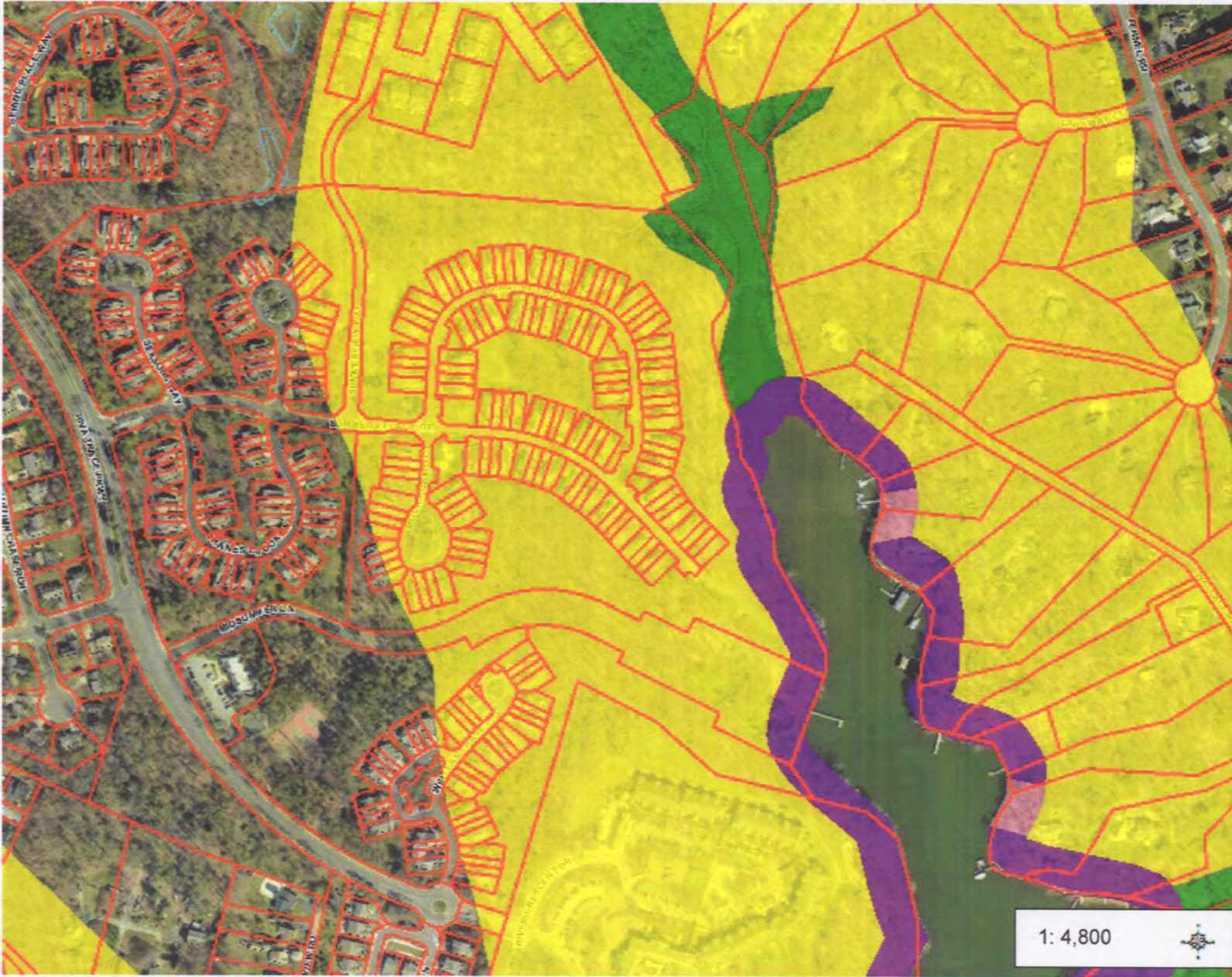
Critical area maps for Riva Trace





Critical area maps for Riva Trace





**Legend**

- OPZ Parcels
- Critical Area Buffer Modification**
- Buffer
- Modified Buffer
- Critical Areas**
- IDA - Intensely Developed Area
- LDA - Limited Development Area
- RCA - Resource Conservation Area
- Points of Interest**

1: 4,800



800.0      0      400.00      800.0 Feet

NAD\_1983\_StatePlane\_Maryland\_FIPS\_1900\_Feet  
 © Latitude Geographics Group Ltd.

This map is a user generated static output from an Internet mapping site and is for reference only. Data layers that appear on this map may or may not be accurate, current, or otherwise reliable.  
**THIS MAP IS NOT TO BE USED FOR NAVIGATION**

**Notes**



**Legend**

- OPZ Parcels
- Critical Area Buffer Modification**
  - Buffer
  - Modified Buffer
- Critical Areas**
  - IDA - Intensely Developed Area
  - LDA - Limited Development Area
  - RCA - Resource Conservation Area
- Points of Interest**

1: 2,400



400.0                      0                      200.00                      400.0 Feet

NAD\_1983\_StatePlane\_Maryland\_FIPS\_1900\_Feet  
 © Latitude Geographics Group Ltd.

This map is a user generated static output from an Internet mapping site and is for reference only. Data layers that appear on this map may or may not be accurate, current, or otherwise reliable.

**THIS MAP IS NOT TO BE USED FOR NAVIGATION**

**Notes**